

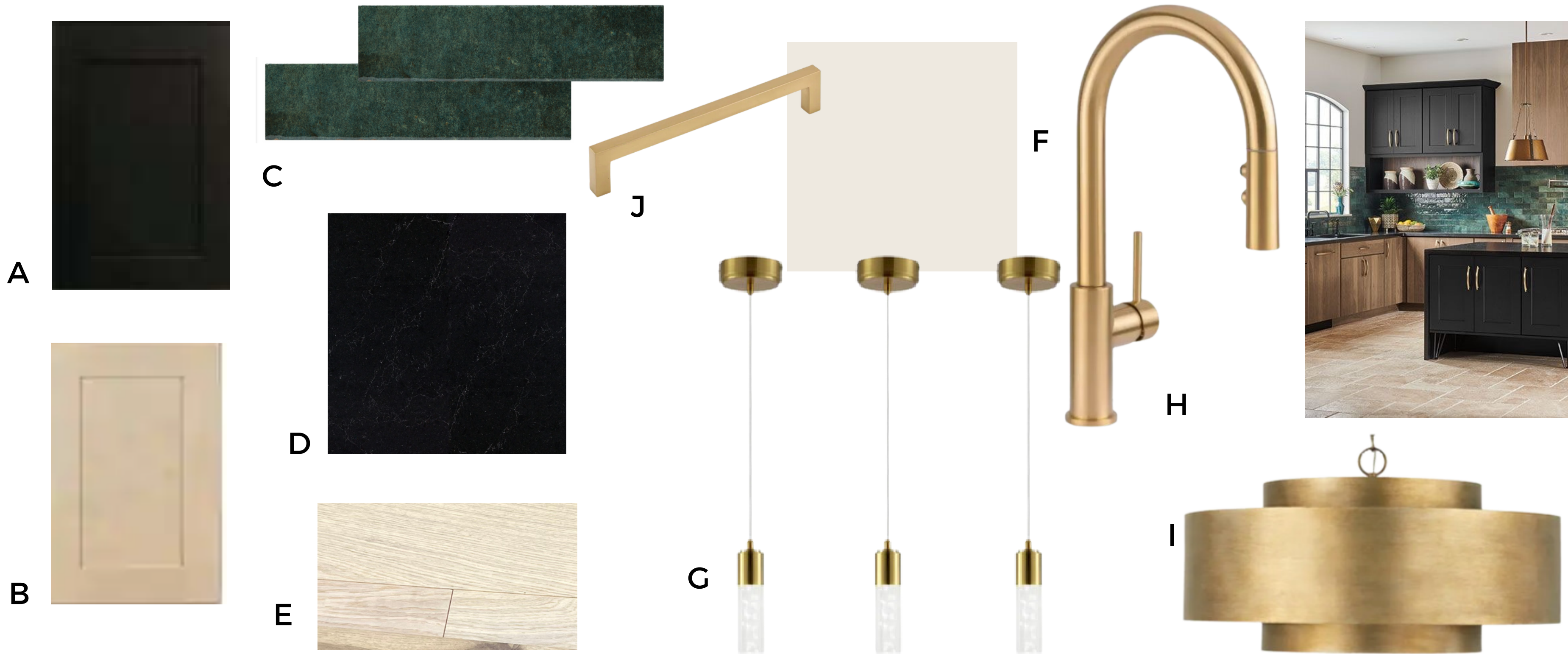


VONNIE JANE

---

THE HAMILTON - BLACK PACKAGE

*\*ALL FINISHES SUBJECT TO CHANGE*



## BLACK KITCHEN

- A - BLACK SHAKER CABINETS
- B - STONE WASH SHAKER CABINETS
- C - BACKSPLASH EMERALD SUBWAY
- D - BLACK COUNTERTOPS
- E - HARDWOOD FLOORING

- F - SHERWIN WILLIAMS "MARSHMALLOW"
- G - KITCHEN PENDANTS
- H - KITCHEN FAUCET
- I - LIVING ROOM DRUM LIGHT FIXTURE
- J- GOLD PULLS

*\*BACKSPLASH - BRICK SET*  
*\*GROUT - WHITE*

VJ



## BLACK KITCHEN - MASTER BATH

A - TERRAZO TILE BACK SHOWER WALL

B - BLACK COUNTERTOPS

C - "PURE" SHOWER SIDE WALL TILES

D - BLACK PENNY TILE

E - BATH FLOOR TILE

F - SHAKER SAND CABINETS

G - GOLD PULLS

H- WALL SCONCES

I - BEADED ROUND MIRROR

J - WIDESPREAD FAUCET

K - SHOWER TRIM PKG

L - SHOWER WAND

*\*TILE SURROUND -  
HEXAGON*

*\*GROUT - OFF WHITE*

VJ



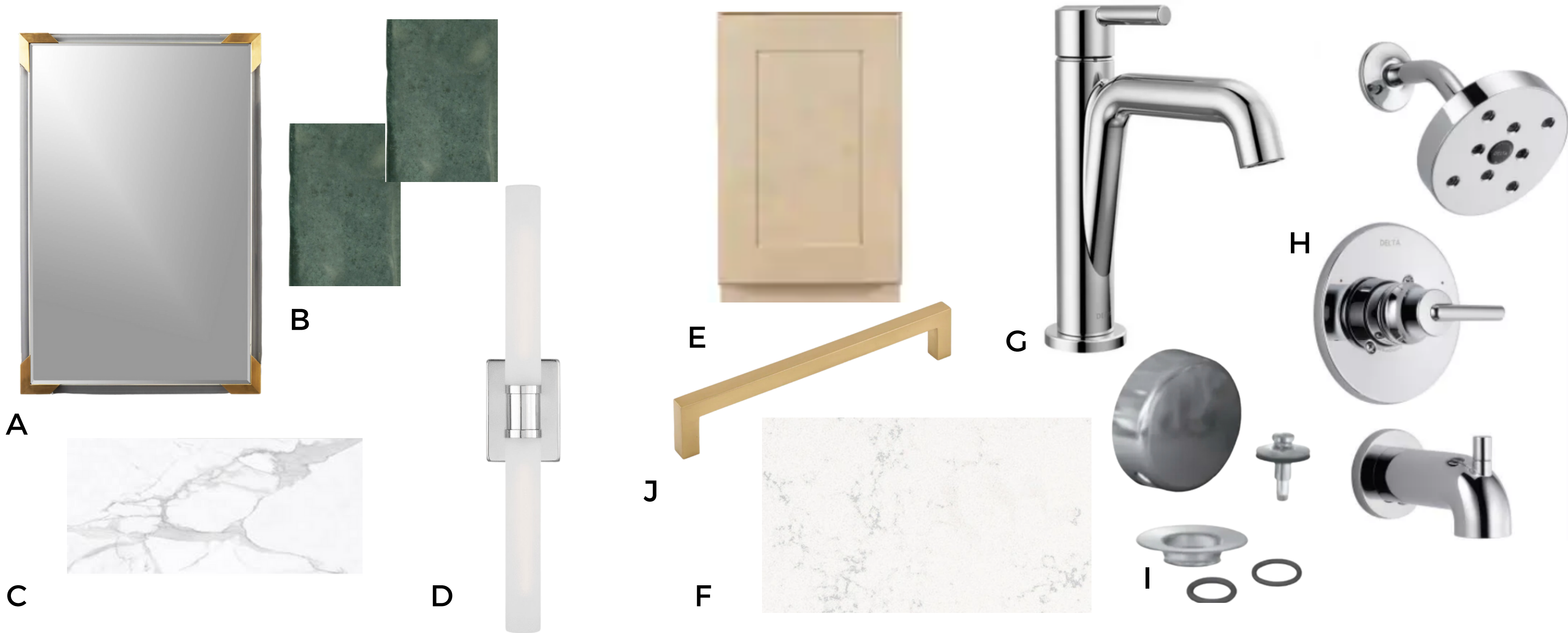
**BLACK KITCHEN - GUEST BATH 1**

- A - GOLD MIRROR
- B - SHOWER SURROUND "PETAL"
- C - BATH FLOOR MATTE TILE
- D - MIXED METAL VANITY LIGHT

- E - GOLD PULLS
- F- BLACK SHAKER CABINETS
- G - COUNTERTOP
- H - MATTE BLACK SINGLE HOLE FAUCET
- I - DRAIN + OVERFLOW
- J - SHOWER KIT

*\*TILE SURROUND -  
VERTICAL STEPLADDER  
\*GROUT - WHITE*





**BLACK KITCHEN - GUEST BATH 2**

- A - ACRYLIC VANITY MIRROR
- B - SHOWER SURROUND "ALLURE"
- C - BATH FLOOR MATTE TILE
- D - SCONCE

- E - STONE SHAKER CABINETS
- F - COUNTERTOP
- G - CHROME SINGLE HOLE FAUCET
- H - SHOWER TRIM PKG
- I - DRAIN + OVERFLOW

- J - GOLD HARDWARE
- \*TILE SURROUND -
- VERTICAL STEP LADDER
- \*GROUT - WHITE





A



B



C



D



E

## APPLIANCE PACKAGE

A - ELECTRIC RANGE

B - DISHWASHER

C - MICROWAVE

D - WALL MOUNT RANGE HOOD

E - FRIDGE

VJ



A

F



B

C



D

## ROOFTOP PACKAGE - UPGRADE

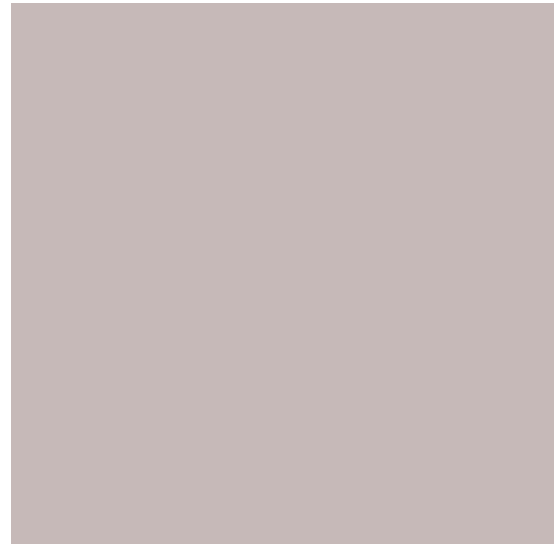
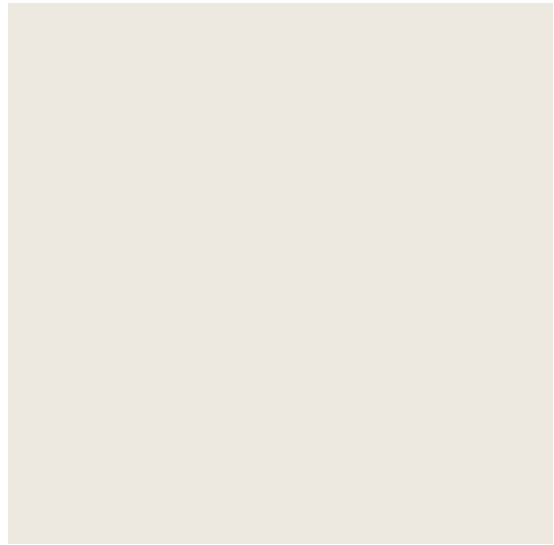
A - PROPANE GRILL

B - OUTDOOR KITCHEN FRIDGE

C - OUTDOOR GRILL ACCESS DOOR

D - OUTDOOR KITCHEN TRASH RECEPTACLE

VJ



A

B

C

D

## BEDROOM LIGHTING + PAINT SELECTIONS

A - SW "MARSHMALLOW" - MAIN BASE THROUGHOUT (WALLS + TRIM)

B - SW "STUDIO MAUVE" - GUEST BEDROOM (ODDS)

C - SW "DARK NIGHT" - GUEST BEDROOM (EVENS)

D - GUEST BEDROOM FAN

E - PRIMARY BEDROOM FIXTURE

A - C = BASE

D - F = ACCENT

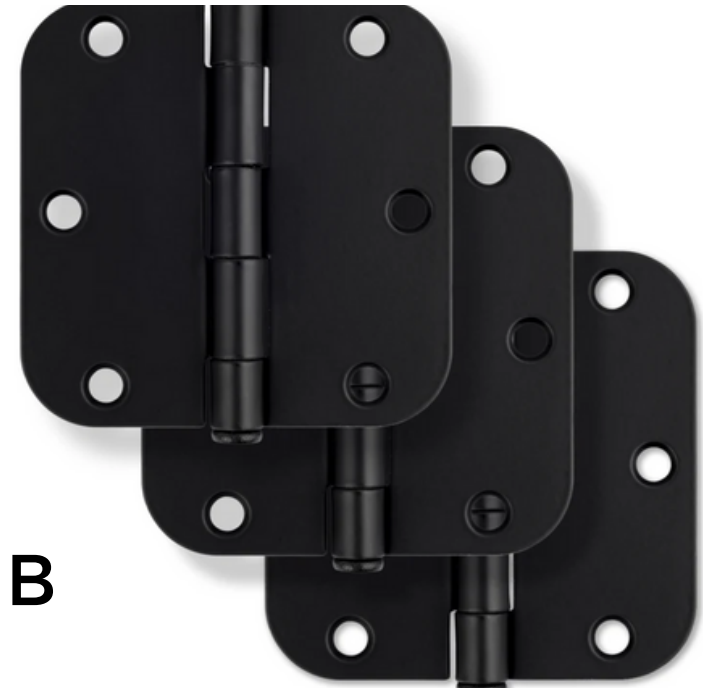
\*WALLS - FLAT + TRIM - GLOSSY

VJ





A



B



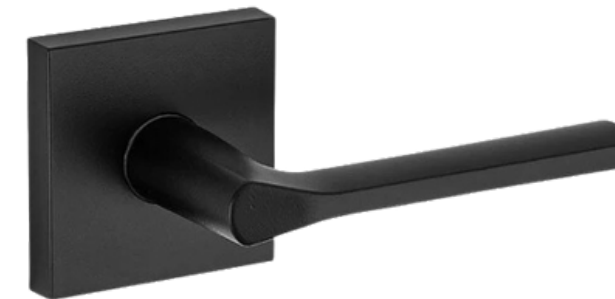
C



D



E



F

## DOORS + HARDWARE

A - SHAKER 2 PANEL INTERIOR DOOR

B - MATTE BLACK HINGES

C.- PRIVACY DOOR PRIVACY SET (MATTE BLACK)

D - FOUR PANEL TRANSOM EXTERIOR DOOR (BLACK)

E - PASSAGE LEVER + TOUCHSCREEN COMBO PACK

F -12" OUTDOOR WALL SCONCE (MATTE BLACK)

VJ